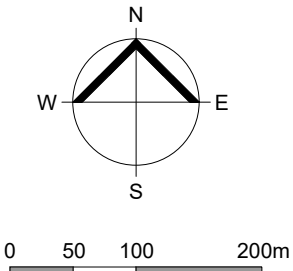




1. Location Plan





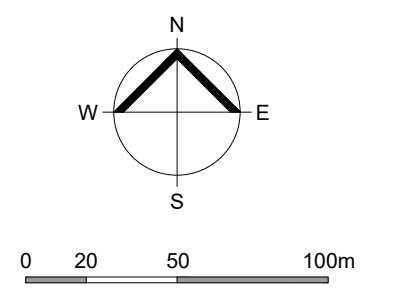
2. Master Plan

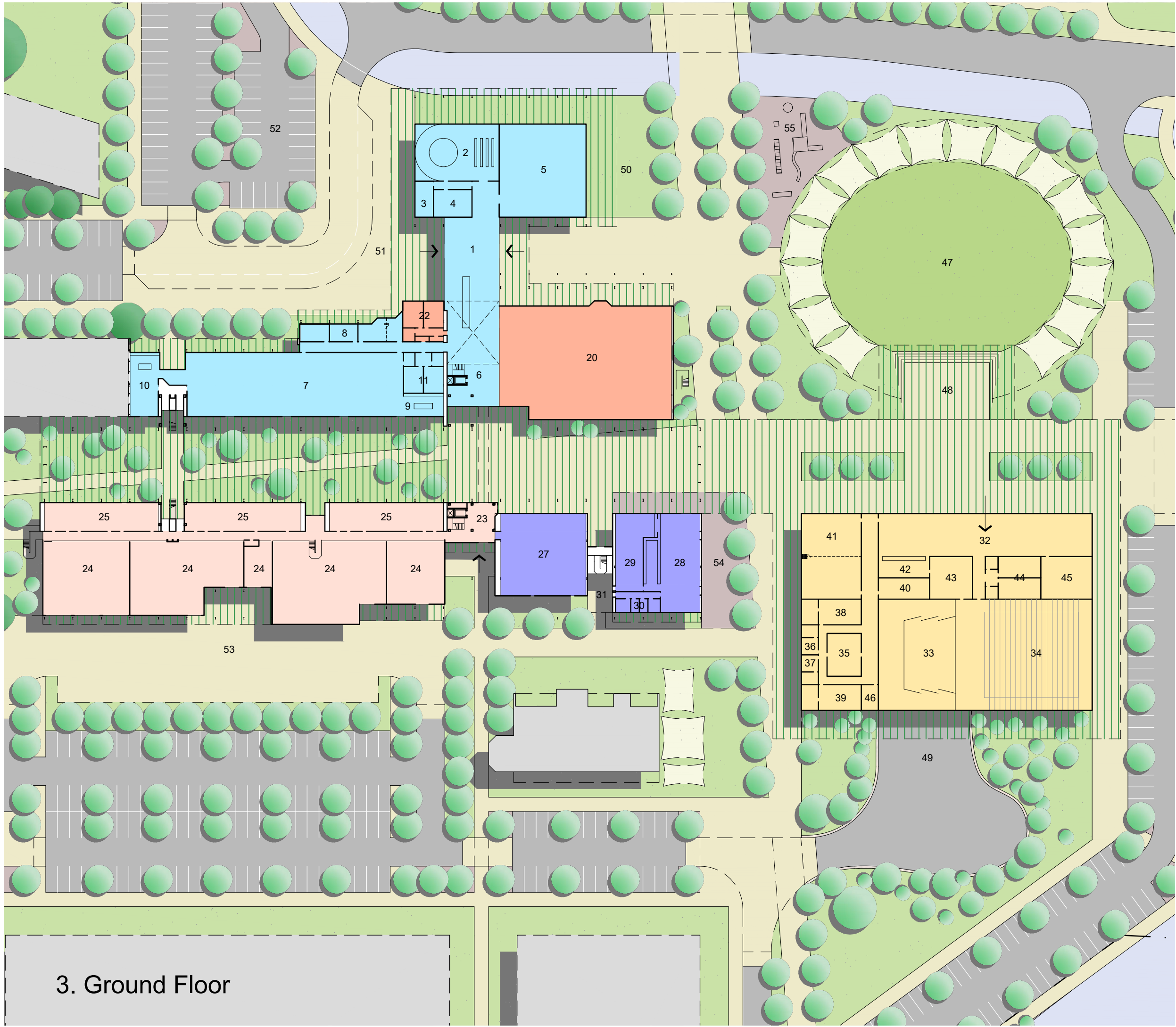
Legend

- Building Use**
- ToPH Civic and Administrative Functions
 - Town Library
 - Community Uses
 - Commercial Space
 - Performing Arts Building
- Land Use**
- Pedestrian Pathways
 - Drainage Swale / Basin
 - Parking and Roads
 - Grassed Areas - Community
 - Existing Trees
 - Proposed Trees

- Notes**
1. ToPH Civic Functions
 2. ToPH Administrative Functions
 3. Town Library
 4. Community Uses
 5. Commercial: Offices
 6. Commercial: Restaurant
 7. Performing Arts Building
 8. Existing Childcare Facility
 9. Amphitheatre
 10. Stage
 11. Expansion for ToPH Functions
 12. Expansion for Community Uses
 13. Future Development Block
 14. Existing Telephone Mast
 15. Play Area

Total Car Bays In TAFE Site: 661





Legend

- **ToPH Civic and Administrative Functions**
Total Area: 2730m²
- 1. Entrance and Reception
- 2. Council Chamber
- 3. Mayor's Office
- 4. Councillor's Lounge
- 5. Multi-Purpose Hall
- 6. South Entrance, Stair and Lift
- 7. Open Plan Office
- 8. Meeting Rooms
- 9. Print Room
- 10. Kitchenette / Break Out Space
- 11. Toilets, End of Trip Facilities, Cleaners
- 12. Upper Lobby
- 13. Reception
- 14. CEO Office
- 15. Director and Manager's Offices
- 16. Meeting Rooms
- 17. Print Room
- 18. Kitchenette / Break Out Space
- 19. Bridge Link

- **Town Library**
Total Area: 1471m²
- 20. Library
- 21. Library Support Spaces
- 22. Public Toilets and Cleaners

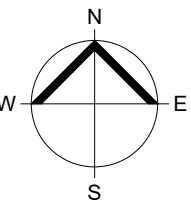
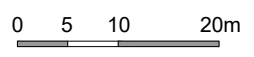
- **Community Uses**
Total Area: 2580m²
- 23. Entrance and Reception
- 24. Workshops
- 25. Workshop Support Spaces
- 26. Upper Lobby

- **Commercial Space: Offices**
Total Area: 682m²
- 27. Commercial Office Space

- **Commercial Space: Restaurant**
Total Area: 367m²
- 28. Restaurant
- 29. Kitchen
- 30. Toilets and Office
- 31. Service Yard

- **Performing Arts Building**
Total Area: 2513m²
- 32. Entrance and Exhibition Space
- 33. Stage
- 34. Auditorium
- 35. Green Room
- 36. Female Lead Dressing Room
- 37. Male Lead Dressing Room
- 38. Female Ensemble Dressing Room
- 39. Male Ensemble Dressing Room
- 40. Costume Store and Laundry
- 41. Rehearsal Studios
- 42. Kiosk and Box Office
- 43. Kitchen
- 44. Toilets and Cleaners
- 45. Furniture and Equipment Store
- 46. Production Office
- 47. Amphitheatre
- 48. Outdoor Stage
- 49. Stage Service Yard and Loading Dock
- 50. Multi-Purpose Hall Covered Area
- 51. Set-Down Area for ToPH and Library
- 52. Car Park for Visitors to ToPH and Library
- 53. Community Uses Parking and Loading
- 54. Restaurant Outdoor Terrace
- 55. Play Area

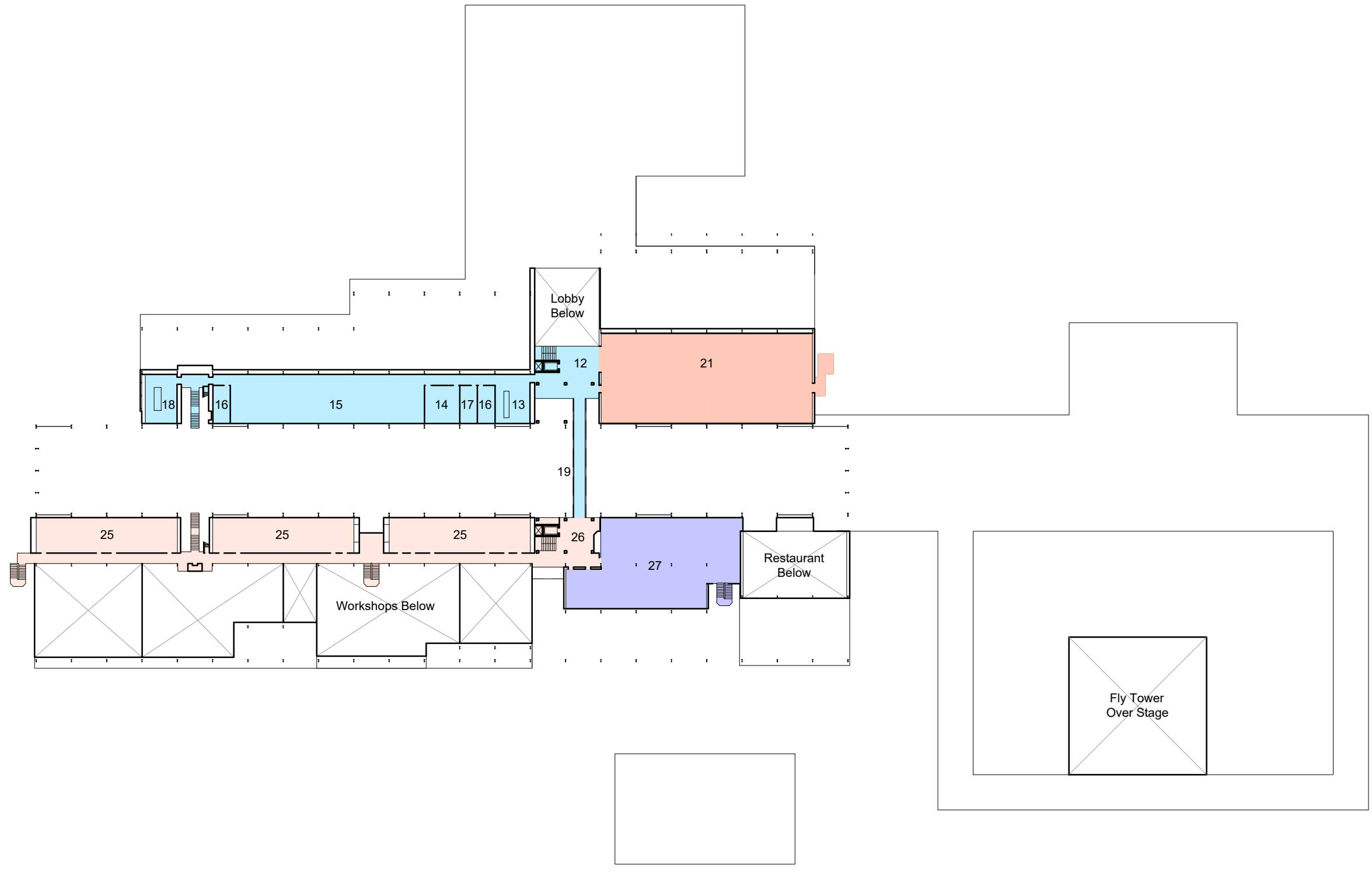
3. Ground Floor



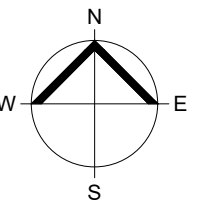
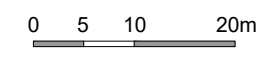


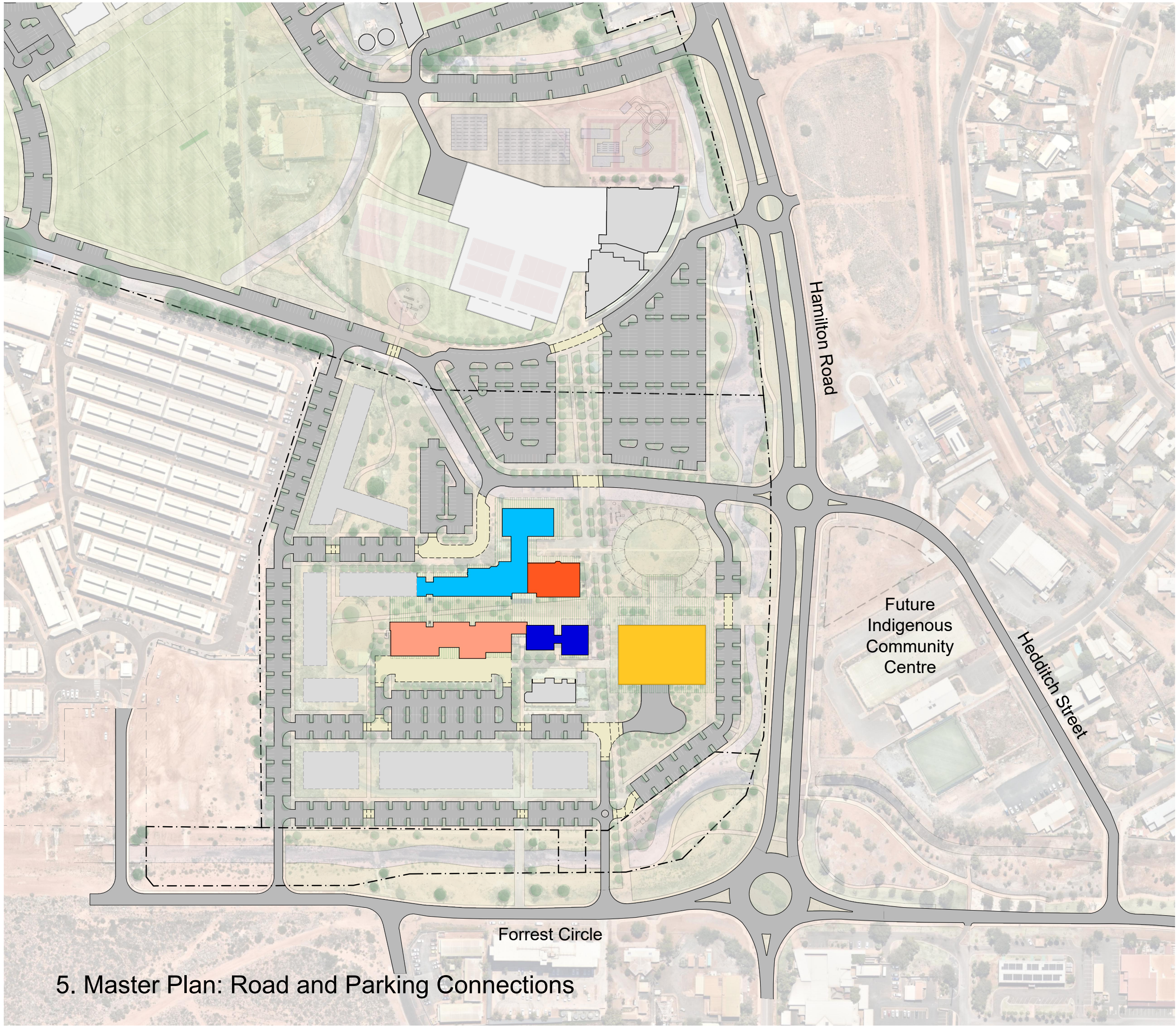
Legend

- ToPH Civic and Administrative Functions**
Total Area: 2730m²
 - 1. Entrance and Reception
 - 2. Council Chamber
 - 3. Mayor's Office
 - 4. Councillor's Lounge
 - 5. Multi-Purpose Hall
 - 6. South Entrance, Stair and Lift
 - 7. Open Plan Office
 - 8. Meeting Rooms
 - 9. Print Room
 - 10. Kitchenette / Break Out Space
 - 11. Toilets, End of Trip Facilities, Cleaners
 - 12. Upper Lobby
 - 13. Reception
 - 14. CEO Office
 - 15. Director and Manager's Offices
 - 16. Meeting Rooms
 - 17. Print Room
 - 18. Kitchenette / Break Out Space
 - 19. Bridge Link
- Town Library**
Total Area: 1471m²
 - 20. Library
 - 21. Library Support Spaces
 - 22. Public Toilets and Cleaners
- Community Uses**
Total Area: 2580m²
 - 23. Entrance and Reception
 - 24. Workshops
 - 25. Workshop Support Spaces
 - 26. Upper Lobby
- Commercial Space: Offices**
Total Area: 682m²
 - 27. Commercial Office Space
- Commercial Space: Restaurant**
Total Area: 367m²
 - 28. Restaurant
 - 29. Kitchen
 - 30. Toilets and Office
 - 31. Service Yard
- Performing Arts Building**
Total Area: 2513m²
 - 32. Entrance and Exhibition Space
 - 33. Stage
 - 34. Auditorium
 - 35. Green Room
 - 36. Female Lead Dressing Room
 - 37. Male Lead Dressing Room
 - 38. Female Ensemble Dressing Room
 - 39. Male Ensemble Dressing Room
 - 40. Costume Store and Laundry
 - 41. Rehearsal Studios
 - 42. Kiosk and Box Office
 - 43. Kitchen
 - 44. Toilets and Cleaners
 - 45. Furniture and Equipment Store
 - 46. Production Office
 - 47. Amphitheatre
 - 48. Outdoor Stage
 - 49. Stage Service Yard and Loading Dock
 - 50. Multi-Purpose Hall Covered Area
 - 51. Set-Down Area for ToPH and Library
 - 52. Car Park for Visitors to ToPH and Library
 - 53. Community Uses Parking and Loading
 - 54. Restaurant Outdoor Terrace
 - 55. Play Area

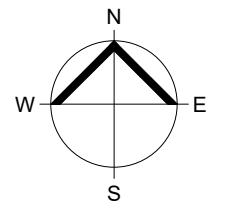


4. First Floor





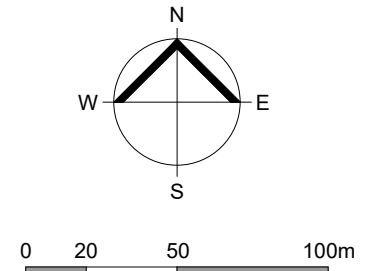
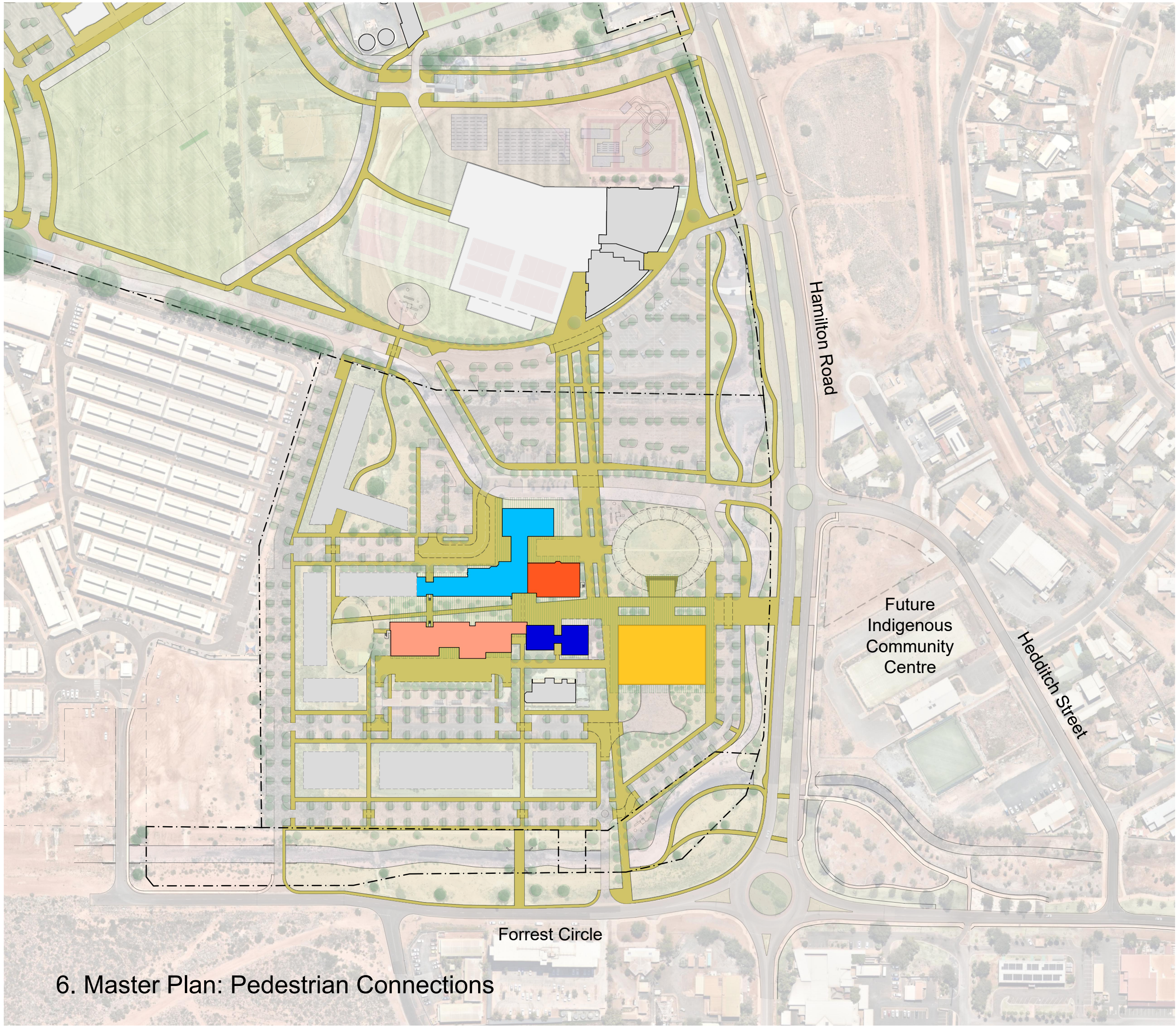
5. Master Plan: Road and Parking Connections

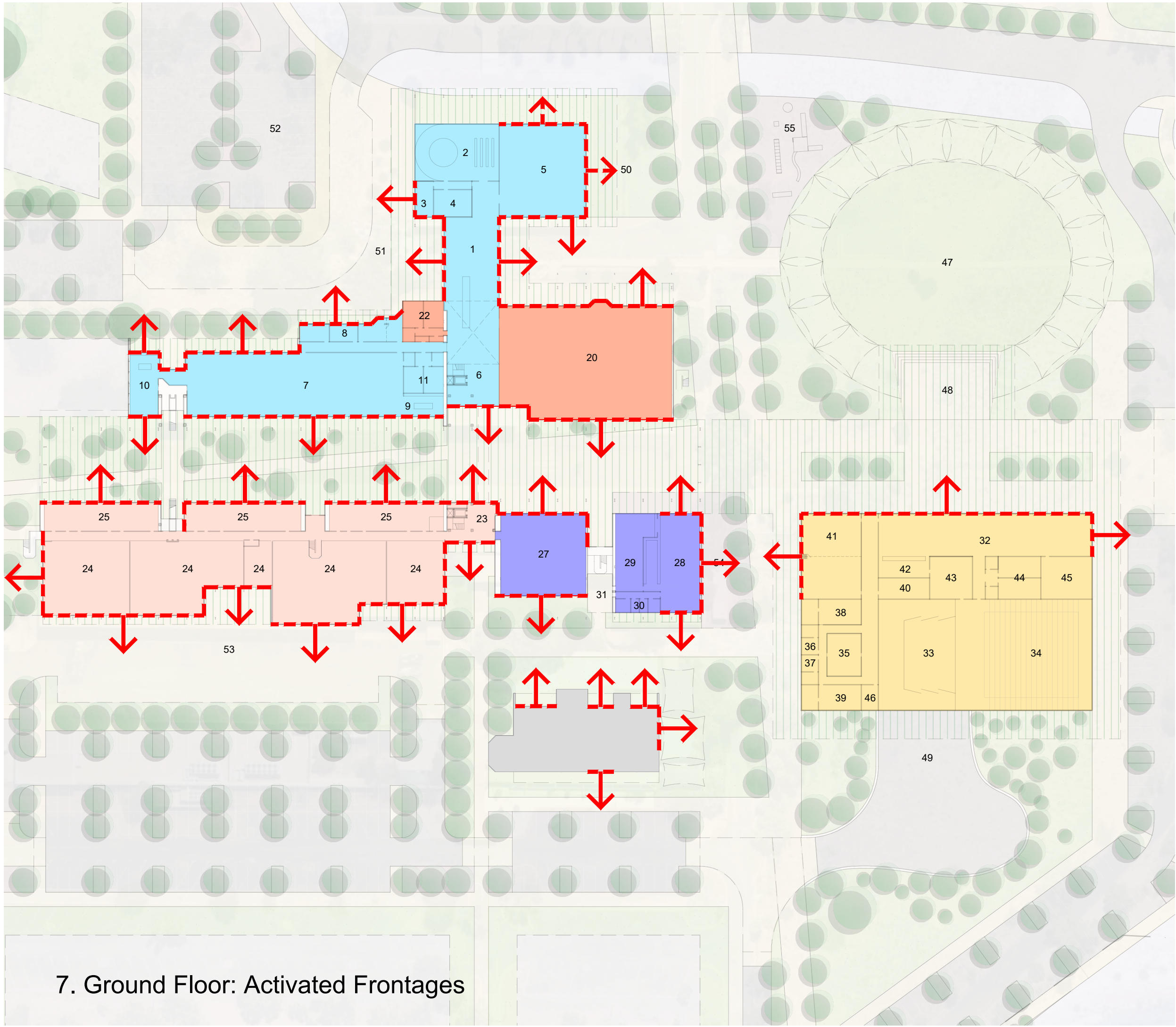


0 20 50 100m



6. Master Plan: Pedestrian Connections





Legend

- - - Active Frontages: Passive Surveillance and Activation of the Public Realm
- ToPH Civic and Administrative Functions**
Total Area: 2730m²
- 1. Entrance and Reception
- 2. Council Chamber
- 3. Mayor's Office
- 4. Councillor's Lounge
- 5. Multi-Purpose Hall
- 6. South Entrance, Stair and Lift
- 7. Open Plan Office
- 8. Meeting Rooms
- 9. Print Room
- 10. Kitchenette / Break Out Space
- 11. Toilets, End of Trip Facilities, Cleaners
- 12. Upper Lobby
- 13. Reception
- 14. CEO Office
- 15. Director and Manager's Offices
- 16. Meeting Rooms
- 17. Print Room
- 18. Kitchenette / Break Out Space
- 19. Bridge Link
- Town Library**
Total Area: 1471m²
- 20. Library
- 21. Library Support Spaces
- 22. Public Toilets and Cleaners
- Community Uses**
Total Area: 2580m²
- 23. Entrance and Reception
- 24. Workshops
- 25. Workshop Support Spaces
- 26. Upper Lobby
- Commercial Space: Offices**
Total Area: 682m²
- 27. Commercial Office Space
- Commercial Space: Restaurant**
Total Area: 367m²
- 28. Restaurant
- 29. Kitchen
- 30. Toilets and Office
- 31. Service Yard
- Performing Arts Building**
Total Area: 2513m²
- 32. Entrance and Exhibition Space
- 33. Stage
- 34. Auditorium
- 35. Green Room
- 36. Female Lead Dressing Room
- 37. Male Lead Dressing Room
- 38. Female Ensemble Dressing Room
- 39. Male Ensemble Dressing Room
- 40. Costume Store and Laundry
- 41. Rehearsal Studios
- 42. Kiosk and Box Office
- 43. Kitchen
- 44. Toilets and Cleaners
- 45. Furniture and Equipment Store
- 46. Production Office
- 47. Amphitheatre
- 48. Outdoor Stage
- 49. Stage Service Yard and Loading Dock
- 50. Multi-Purpose Hall Covered Area
- 51. Set-Down Area for ToPH and Library
- 52. Car Park for Visitors to ToPH and Library
- 53. Community Uses Parking and Loading
- 54. Restaurant Outdoor Terrace
- 55. Play Area

7. Ground Floor: Activated Frontages

