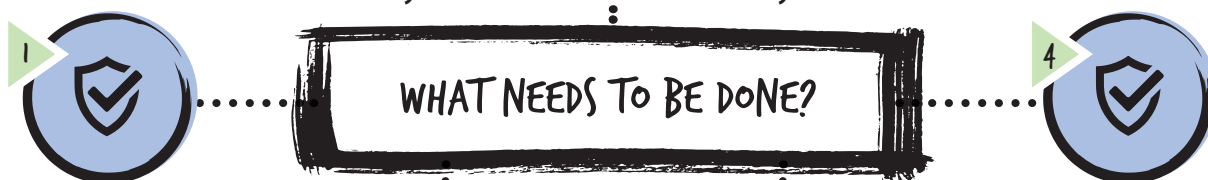


GOAL 1.1

By 2030, every family in Hedland can raise healthy children who are ready to learn



The whole community works together to make the early years sector better. Think long term: make partnerships in the community which make child care services better

WHO IS DOING IT?
Town of Port Hedland and Hedland Early Years Network / Agencies

HOW LONG WILL IT TAKE?
2 to 3 years or less

WHO WILL WE CONSULT?
Hedland Aboriginal Strong Leaders



The whole community works together to make education programming better for parents and carers. Work together to promote stronger family governance

WHO IS DOING IT?
Hedland Early Years Network / Agencies

HOW LONG WILL IT TAKE?
24 months or less

WHO WILL WE CONSULT?
Hedland Aboriginal Strong Leaders



Put into place recommendations 6.1 (a-e) and 6.12 (a-d) from the Royal Commission into Institutional Responses to Child Sexual Abuse: Final Report (pending Pilbara Healing Plan recommendation)

WHO IS DOING IT?
Hedland Early Years Network and Department of Education

HOW LONG WILL IT TAKE?
24 months or less

WHO WILL WE CONSULT?
Hedland Aboriginal Strong Leaders

Work together as a community to put into place a Relationship and Sexuality Education (RSE) strategy. Focus on teaching trainers in the community these skills, on these topics:

- Consent and boundaries. Do I feel comfortable with this?
- Healthy and respectful relationships
- Good communication
- Good personal health and hygiene

WHO IS DOING IT?
Hedland Community Safety Action Group, Hedland Family Violence Action Group and Hedland Youth Stakeholder Action Group

HOW LONG WILL IT TAKE?
2 to 3 years or less

WHO WILL WE CONSULT?
Hedland Aboriginal Strong Leaders

HOW WILL WE KNOW WE ARE MEETING THIS GOAL?

- ▶ More young people enrolled in school
- ▶ More young people attending school
- ▶ More at-risk young people attending school
- ▶ More people knowing about fetal alcohol spectrum disorder (FASD)
- ▶ Lower death rates in children aged 0 to 14
- ▶ Less low birth weight babies – aim for healthy weight
- ▶ Lower rate of teenage mothers
- ▶ Look at the indicators from the Australian Institute of Health and Welfare (AIHW)
- ▶ More children fully immunised by the age of 2
- ▶ More children going to playgroup
- ▶ Track the ABS Socio-Economic Indexes for Areas (SEIFA) score
- ▶ More people going to the Positive parenting / Ngala program
- ▶ Track the ID Community population projection number



By 2030, we work together as a community to improve mental health and wellbeing



When safety issues increase, improve communication which lets people know about services in Hedland which can help

WHO IS DOING IT?

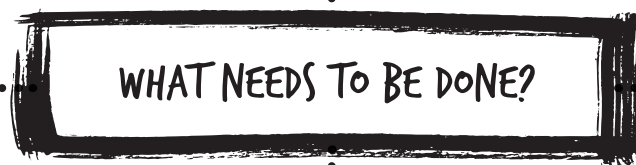
Town of Port Hedland and relevant working groups

HOW LONG WILL IT TAKE?

6 to 12 months or less

WHO WILL WE CONSULT?

Hedland Aboriginal Strong Leaders



Speak up and spread the word about the Pilbara Mentors program to get more volunteers on board. Get more people from industry involved

WHO IS DOING IT?

Hedland Collective Resources Working Group

HOW LONG WILL IT TAKE?

6 to 12 months or less

WHO WILL WE CONSULT?

Hedland Aboriginal Strong Leaders



Make policies, guidelines and tools to make people more aware and understanding of other cultures. Create more language services in Hedland

WHO IS DOING IT?

Hedland Community Safety Action Group

HOW LONG WILL IT TAKE?

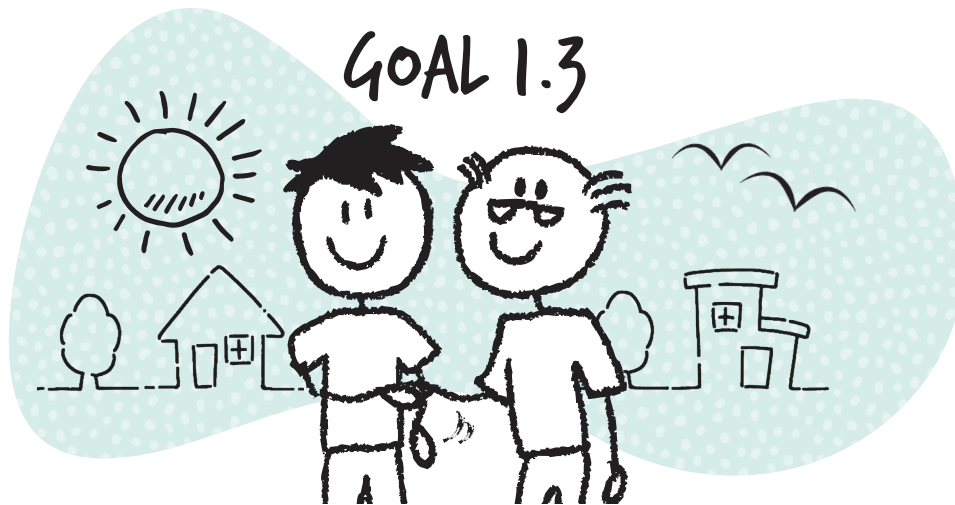
2-3 years

WHO WILL WE CONSULT?

Hedland Aboriginal Strong Leaders

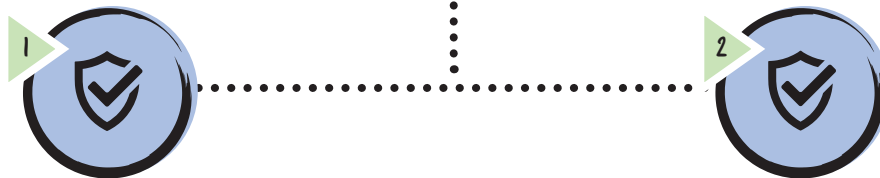
WITH THESE GOALS,
WHAT WILL WE
USE TO MEASURE
HOW THEY ARE
WORKING?

- ▶ Social housing population
- ▶ Child protection intake and assessment data
- ▶ Notifiable infectious diseases for 0-14 year olds
- ▶ DFV triage intake numbers from WA Police
- ▶ Child care waiting list numbers
- ▶ The percentage of children which are vulnerable per outcomes in the Australian Early Development Census
- ▶ Court referral of AOD related
- ▶ Work for the dole date
- ▶ TAFE admission data
- ▶ TAFE completion or discontinued data
- ▶ Mentor data
- ▶ Mentee registration data
- ▶ Child protection notifications
- ▶ Long-term custody orders
- ▶ Youth Involvement Council admission data
- ▶ Crime portal data
- ▶ Mental health / suicide / self-harm admissions for youth
- ▶ NAPLAN results for students in year 5 – are they achieving the national minimum standard?
- ▶ Annual Mission Australia youth survey data from the Pilbara / Mid-West
- ▶ Killara House patron data
- ▶ Outreach program data



By 2030, we understand and celebrate community stories, history, culture and their spaces

WHAT NEEDS TO BE DONE?



Read the 42 recommendations outlined in the 'inquest into the 13 deaths of children and young persons in the Kimberly region'. How can we make Hedland's mental health sector better based on the recommendations outlined in the inquest report?

WHO IS DOING IT?

Hedland Community Safety Action Group

HOW LONG WILL IT TAKE?

24 months or less

WHO WILL WE CONSULT?

Hedland Aboriginal Strong Leaders

Make people more aware of Hedland's identity. What does it mean to be part of Hedland? What makes Hedland special? Get people involved with Hedland's history:

- More cultural tourism
- Bring Aboriginal language into public spaces and facilities
- More cultural awareness training

WHO IS DOING IT?

All stakeholders

HOW LONG WILL IT TAKE?

2 to 3 years or less

WHO WILL WE CONSULT?

Hedland Aboriginal Strong Leaders

- ▶ Social housing population
- ▶ Child protection intake and assessment data
- ▶ Notifiable infectious diseases for 0-14 year olds
- ▶ DFV triage intake numbers from WA Police
- ▶ Child care waiting list numbers
- ▶ The percentage of children which are vulnerable per outcomes in the Australian Early Development Census
- ▶ Court referral of AOD related
- ▶ Work for the dole date
- ▶ TAFE admission data
- ▶ TAFE completion or discontinued data
- ▶ Mentor data
- ▶ Mentee registration data
- ▶ Child protection notifications
- ▶ Long-term custody orders
- ▶ Youth Involvement Council admission data
- ▶ Crime portal data
- ▶ Mental health / suicide / self-harm admissions for youth
- ▶ NAPLAN results for students in year 5 – are they achieving the national minimum standard?
- ▶ Annual Mission Australia youth survey data from the Pilbara / Mid-West
- ▶ Karlarra House patron data
- ▶ Outreach program data

WITH THESE GOALS,
WHAT WILL WE
USE TO MEASURE
HOW THEY ARE
WORKING?



GOAL 2.1

By 2030, we are proud of our streets and neighbourhoods and talk more with our neighbours

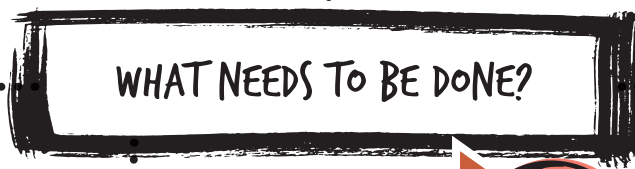


Try a Neighbourhood Watch program on streets where the Police visit more often, or streets with more graffiti and litter issues

WHO IS DOING IT?
Town of Port Hedland and WA Police

HOW LONG WILL IT TAKE?
24 months or less

WHO WILL WE CONSULT?
Hedland Aboriginal Strong Leaders



Advocate and champion for community patrol services

WHO IS DOING IT?
Hedland Community Safety Action Group

HOW LONG WILL IT TAKE?
24 months or less

WHO WILL WE CONSULT?
Hedland Aboriginal Strong Leaders



Read and review the s152 'Liquor Restricted Premises' (LPR) outcomes.

What's working and what's not?

- What's changed in a 6 month timeframe
- Referral Identification
- What happens before / after call outs
- Have there been less call outs since LPR was started?

WHO IS DOING IT?
Port Hedland Alcohol and Other Drug Management Plan Group

HOW LONG WILL IT TAKE?
6 to 12 months or less

WHO WILL WE CONSULT?
Hedland Aboriginal Strong Leaders



Support the development of better relationships between Aboriginal and non- Aboriginal people

WHO IS DOING IT?
Hedland Community Safety Advisory Forum

HOW LONG WILL IT TAKE?
2 to 3 years

WHO WILL WE CONSULT?
Hedland Aboriginal Strong Leaders

WITH THESE GOALS, WHAT WILL WE USE TO MEASURE HOW THEY ARE WORKING?

- ▶ Public inebriation data
- ▶ Number of liquor licenses
- ▶ Number of existing permits
- ▶ Liquor license applications over the last year
- ▶ A Health and wellbeing survey to find out harmful drinking behaviour in the short and long term
- ▶ Number of alcohol related deaths
- ▶ Number of assaults
- ▶ Property damage data
- ▶ Crash statistics
- ▶ Graffiti
- ▶ How many noise complaints
- ▶ Clean up costs of events and licenses places
- ▶ How much litter is collected and the types of litter
- ▶ Number of community patrols
- ▶ Number of complaints to the Department of Communities by residents
- ▶ The responses from the Alcohol and Other Drug (AOD) survey
- ▶ Number of incidents and the costs of alcohol related property damage. The damage to bus stops and public spaces
- ▶ Types of customer complaints
- ▶ Cleaning costs of alcohol related litter
- ▶ Answers to the community safety survey
- ▶ SNAP, SEND, SOLVE data. This is an app where people can take pictures of problems in Hedland (eg. Broken light) and send the picture to the Town of Port Hedland
- ▶ Number of Neighbourhood grants
- ▶ Responses to the annual industry staff survey
- ▶ Responses to the Town's annual community survey
- ▶ Banned Drinkers Register



By 2030, we all feel safe going to public spaces
at any time, whether it's the day or night



WHAT NEEDS TO BE DONE?



Support reforms of taxing alcohol
and pricing changes that will help
reduce harmful drinking.

WHO IS DOING IT?

Town of Port Hedland and Port Hedland
Alcohol and Other Drug Management
Plan Group

HOW LONG WILL IT TAKE?

6 to 12 months or less

WHO WILL WE CONSULT?

Hedland Aboriginal Strong Leaders



Play support role within the Port
Hedland Alcohol and Other Drug
Management Plan Group

WHO IS DOING IT?

Town of Port Hedland.

HOW LONG WILL IT TAKE?

24 months or less

WHO WILL WE CONSULT?

Hedland Aboriginal Strong Leaders

When planning population
growth, be mindful of
people's cultural needs
and those who are being
impacted by harmful
drinking.

WHO IS DOING IT?

Town of Port Hedland

HOW LONG WILL IT TAKE?

24 months or less

WHO WILL WE CONSULT?

Hedland Aboriginal Strong Leaders

- ▶ Public inebriation data
- ▶ Number of liquor licenses
- ▶ Number of existing permits
- ▶ Liquor license applications over the last year
- ▶ A Health and wellbeing survey to find out harmful drinking behaviour in the short and long term
- ▶ Number of alcohol related deaths
- ▶ Number of assaults
- ▶ Property damage data
- ▶ Crash statistics
- ▶ Graffiti

- ▶ How many noise complaints
- ▶ Clean up costs of events and licenses places
- ▶ How much litter is collected and the types of litter
- ▶ Number of community patrols
- ▶ Number of complaints to the Department of Communities by residents
- ▶ The responses from the Alcohol and Other Drug (AOD) survey
- ▶ Number of incidents and the costs of alcohol related property damage. The damage to bus stops and public spaces
- ▶ Types of customer complaints

- ▶ Cleaning costs of alcohol related litter
- ▶ Answers to the community safety survey
- ▶ SNAP, SEND, SOLVE data. This is an app where people can take pictures of problems in Hedland (eg. Broken light) and send the picture to the Town of Port Hedland
- ▶ Number of Neighbourhood grants
- ▶ Responses to the annual industry staff survey
- ▶ Responses to the Town's annual community survey
- ▶ Banned Drinkers Register
- ▶ Building better relationships between the Aboriginal and non-Aboriginal population on HCSAF

**WITH THESE
GOALS, WHAT WILL
WE USE TO MEASURE
HOW THEY ARE
WORKING?**



By 2030, we all feel safe going to public spaces
at any time, whether it's the day or night



WHAT NEEDS TO BE DONE?



Find 3 places in South Hedland and pilot Crime Prevention through Environmental Design (CPTED). This is where public spaces are designed in a way which try to reduce crime. Current spaces can also be measured

WHO IS DOING IT?
Town of Port Hedland and WA Police

HOW LONG WILL IT TAKE?
24 months or less

WHO WILL WE CONSULT?
Hedland Aboriginal Strong Leaders



Make policies that help reduce alcohol related harm. Help create and support more low-risk drink settings, especially when children and young people are there

WHO IS DOING IT?
Port Hedland Alcohol and Other Drug Management Plan Group and Town of Port Hedland

HOW LONG WILL IT TAKE?
24 months or less

WHO WILL WE CONSULT?
Hedland Aboriginal Strong Leaders

WITH THESE GOALS, WHAT WILL WE USE TO MEASURE HOW THEY ARE WORKING?

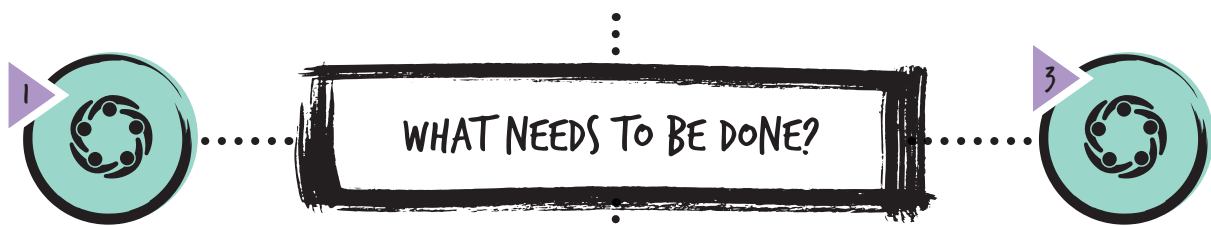
- ▶ Public inebriation data
- ▶ Number of liquor licenses
- ▶ Number of existing permits
- ▶ Liquor license applications over the last year
- ▶ A Health and wellbeing survey to find out harmful drinking behaviour in the short and long term
- ▶ Number of alcohol related deaths
- ▶ Number of assaults
- ▶ Property damage data
- ▶ Crash statistics
- ▶ Graffiti
- ▶ How many noise complaints
- ▶ Clean up costs of events and licenses places
- ▶ How much litter is collected and the types of litter
- ▶ Number of community patrols
- ▶ Number of complaints to the Department of Communities by residents
- ▶ The responses from the Alcohol and Other Drug (AOD) survey
- ▶ Number of incidents and the costs of alcohol related property damage. The damage to bus stops and public spaces
- ▶ Types of customer complaints
- ▶ Cleaning costs of alcohol related litter
- ▶ Answers to the community safety survey
- ▶ SNAP, SEND, SOLVE data. This is an app where people can take pictures of problems in Hedland (eg. Broken light) and send the picture to the Town of Port Hedland
- ▶ Number of Neighbourhood grants
- ▶ Responses to the annual industry staff survey
- ▶ Responses to the Town's annual community survey
- ▶ Banned Drinkers Register

GOAL 3:
A Stronger and Fairer Community

As a community, do we come together and support people who are more vulnerable?



By 2030, engage young people with government and service providers to understand their ideas and insights into how policy and programs can better meet their needs.

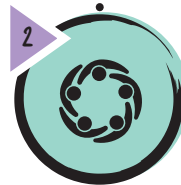


Create a short-term accommodation strategy which looks at the needs of homeless people. How can we better support those who are either homeless or at risk of homelessness?

WHO IS DOING IT?
District Leadership Group
Hedland Youth Stakeholder Action Group

HOW LONG WILL IT TAKE?
2 to 3 years or less

WHO WILL WE CONSULT?
Hedland Aboriginal Strong Leaders



Work with other local governments to start a Pilbara wide, 3 times a year youth conference

WHO IS DOING IT?
Hedland Youth Stakeholder Action Group

HOW LONG WILL IT TAKE?
2 to 3 years or less

WHO WILL WE CONSULT?
Hedland Aboriginal Strong Leaders

Create and co-fund a youth strategic plan which is put into action by the Hedland Youth Stakeholder Action Group (HYSAG)

WHO IS DOING IT?
Town of Port Hedland

HOW LONG WILL IT TAKE?
24 months or less

WHO WILL WE CONSULT?
Hedland Aboriginal Strong Leaders

WITH THESE GOALS, WHAT WILL WE USE TO MEASURE HOW THEY ARE WORKING?

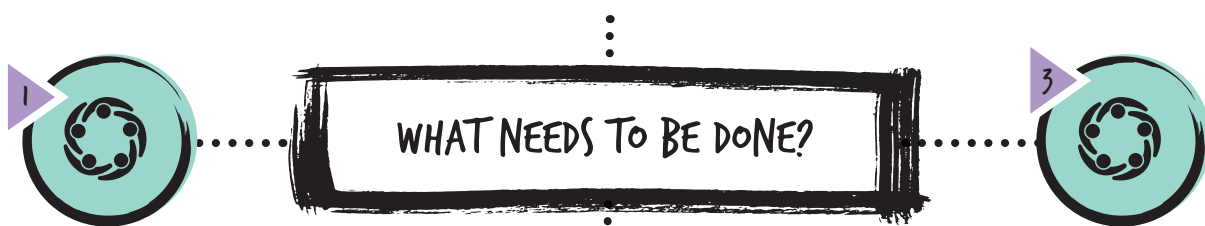
- ▶ Short term strategy findings from previous research
- ▶ Homelessness data
- ▶ Sobering up shelter data
- ▶ Community patrol geographical data
- ▶ Displacement data
- ▶ RFQ / RFT application data
- ▶ Planning / building application data
- ▶ EHO application data
- ▶ Corrective and Youth Justice community-based order data
- ▶ Annual Mission Australia – Youth Survey for the Pilbara and Mid-West responses
- ▶ Karlarra House patron data
- ▶ Outreach health program data
- ▶ Court referrals data
- ▶ Court bail program admissions data
- ▶ Social services recipient data
- ▶ Trust / Corporation membership data
- ▶ Town of Port Hedland Reconciliation Action Plan Key Performance Indicators
- ▶ Industry Reconciliation Action Plan's Key Performance Indicators
- ▶ Incarceration rates of Aboriginal and non-Aboriginal adults and young people

GOAL 3:
A Stronger and Fairer Community

As a community, do we come together and support people who are more vulnerable?



By 2030, the Hedland community is welcoming and understanding of people from diverse cultures that come through the community

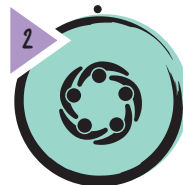


Create more awareness of interpreter services and increase demand for people who have english as a second language.

WHO IS DOING IT?
Hedland Community Safety Action Group

HOW LONG WILL IT TAKE?
24 months or less

WHO WILL WE CONSULT?
Hedland Aboriginal Strong Leaders
Wangka Maya Pilbara Aboriginal Language Centre



Promote culturally appropriate social and community inclusion

WHO IS DOING IT?
Hedland Community Safety Advisory Forum

HOW LONG WILL IT TAKE?
6 to 12 months or less

WHO WILL WE CONSULT?
Hedland Aboriginal Strong Leaders

Identify outreach services to remote communities to advertise Hedland services, upcoming events and health campaigns

WHO IS DOING IT?
Hedland Community Safety Action Group

HOW LONG WILL IT TAKE?
6 to 12 months or less

WHO WILL WE CONSULT?
Hedland Aboriginal Strong Leaders

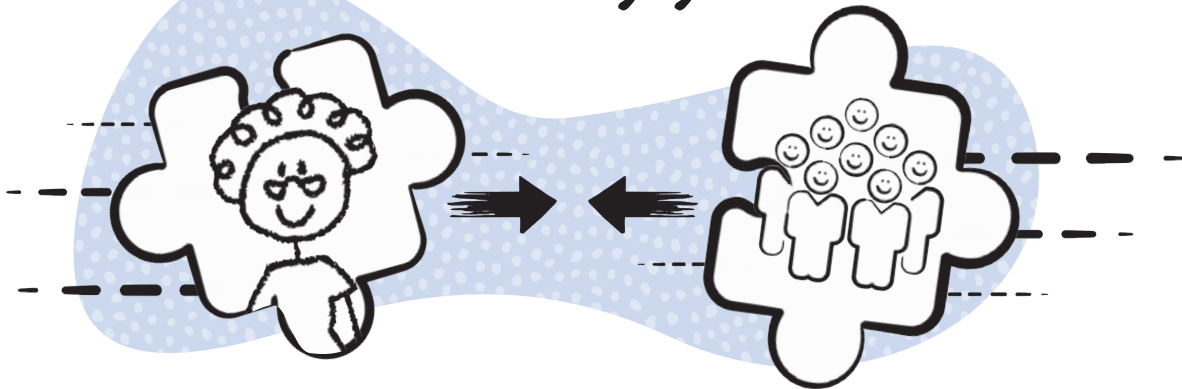
WITH THESE GOALS, WHAT WILL WE USE TO MEASURE HOW THEY ARE WORKING?

- ▶ Short term strategy findings from previous research
- ▶ Homelessness data
- ▶ Sobering up shelter data
- ▶ Community patrol geographical data
- ▶ Displacement data
- ▶ RFQ / RFT application data
- ▶ Planning / building application data
- ▶ EHO application data
- ▶ Corrective and Youth Justice community-based order data
- ▶ Annual Mission Australia – Youth Survey for the Pilbara and Mid-West responses
- ▶ Karlarra House patron data
- ▶ Outreach health program data
- ▶ Court referrals data
- ▶ Court bail program admissions data
- ▶ Social services recipient data
- ▶ Trust / Corporation membership data
- ▶ Town of Port Hedland Reconciliation Action Plan Key Performance Indicators
- ▶ Industry Reconciliation Action Plan's Key Performance Indicators
- ▶ Incarceration rates of Aboriginal and non-Aboriginal adults and young people

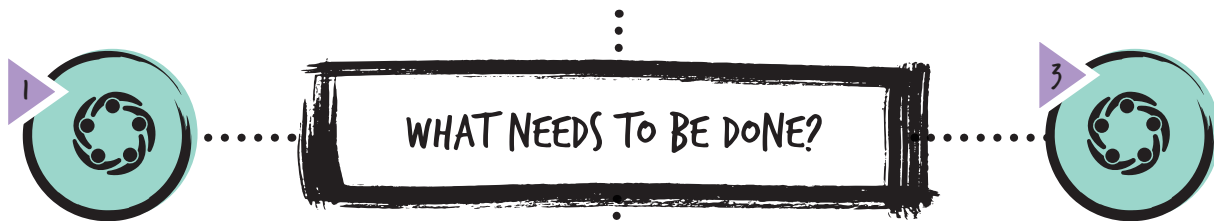
GOAL 3:
A Stronger and Fairer Community

As a community, do we come together and support people who are more vulnerable?

GOAL 3.3



By 2030, vulnerable people in Hedland feel they can actively participate in community life



Help create social enterprise for vulnerable groups. This means businesses which work to make the community a better place and support the vulnerable.

WHO IS DOING IT?
Hedland Community Safety Advisory Forum

HOW LONG WILL IT TAKE?
2 to 3 years or less

WHO WILL WE CONSULT?
Hedland Aboriginal Strong Leaders
Disability Services Providers

Help create a safe space for men, like a Men's Shed or Breathing Space House. This is a place where men can come and feel supported and be social

WHO IS DOING IT?
Hedland Family Violence Action Group

HOW LONG WILL IT TAKE?
2 to 3 years or less

WHO WILL WE CONSULT?
Hedland Aboriginal Strong Leaders

Find out what the needs are of the seniors in our community. Create a 5 to 10 year strategy to respond to these needs, with quick wins in transport, social inclusion and quality of life impacts

WHO IS DOING IT?
Town of Port Hedland, WA Country Health Services (WACHS)

HOW LONG WILL IT TAKE?
24 months or less

WHO WILL WE CONSULT?
Hedland Aboriginal Strong Leaders

WITH THESE GOALS, WHAT WILL WE USE TO MEASURE HOW THEY ARE WORKING?

- ▶ Short term strategy findings from previous research
- ▶ Homelessness data
- ▶ Sobering up shelter data
- ▶ Community patrol geographical data
- ▶ Displacement data
- ▶ RFQ / RFT application data
- ▶ Planning / building application data
- ▶ EHO application data
- ▶ Corrective and Youth Justice community-based order data
- ▶ Annual Mission Australia – Youth Survey for the Pilbara and Mid-West responses
- ▶ Karlarra House patron data
- ▶ Outreach health program data
- ▶ Court referrals data
- ▶ Court bail program admissions data
- ▶ Social services recipient data
- ▶ Trust / Corporation membership data
- ▶ Town of Port Hedland Reconciliation Action Plan Key Performance Indicators
- ▶ Industry Reconciliation Action Plan's Key Performance Indicators
- ▶ Incarceration rates of Aboriginal and non-Aboriginal adults and young people

GOAL 3:
A Stronger and Fairer Community

As a community, do we come together and support people who are more vulnerable?



By 2030, Hedland will have a justice re-investment (JR) model. This helps communities work together to reduce rates of crime and imprisonment, putting money into early intervention



Find out how a justice re-investment model can work in Hedland. Can we partner with existing justice reinvestment projects nationally?:

- Learn more about current JR models
- Identify intervention services and programs already in Hedland
- Be mindful of different cultural needs
- Work with all stakeholders to find out if Hedland needs a JR
- Find out the costs of JR compared to current justice models

WHO IS DOING IT?
Hedland Community Safety Advisory Forum and District Leadership Group
Department of Justice

HOW LONG WILL IT TAKE?
2 to 3 years or less

WHO WILL WE CONSULT?
Hedland Aboriginal Strong Leaders

WHO WILL WE CONSULT?
Hedland Aboriginal Strong Leaders

WHO WILL WE CONSULT?
Hedland Aboriginal Strong Leaders

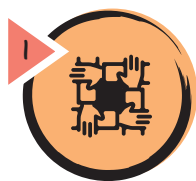
WITH THESE GOALS, WHAT WILL WE USE TO MEASURE HOW THEY ARE WORKING?

- ▶ Short term strategy findings from previous research
- ▶ Homelessness data
- ▶ Sobering up shelter data
- ▶ Community patrol geographical data
- ▶ Displacement data
- ▶ RFQ / RFT application data
- ▶ Planning / building application data
- ▶ EHO application data
- ▶ Corrective and Youth Justice community-based order data
- ▶ Annual Mission Australia – Youth Survey for the Pilbara and Mid-West responses
- ▶ Karlarra House patron data
- ▶ Outreach health program data
- ▶ Court referrals data
- ▶ Court bail program admissions data
- ▶ Social services recipient data
- ▶ Trust / Corporation membership data
- ▶ Town of Port Hedland Reconciliation Action Plan Key Performance Indicators
- ▶ Industry Reconciliation Action Plan's Key Performance Indicators
- ▶ Incarceration rates of Aboriginal and non-Aboriginal adults and young people

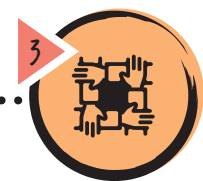
GOAL 4.1



By 2030, community safety governance forms strong partnerships by matching the efforts and resources of key stakeholders



WHAT NEEDS TO BE DONE?



Every year, review governance membership and terms of reference for the Hedland Community Safety Advisory Forum. Make sure all stakeholders are involved in community safety governance, culture and decision making

WHO IS DOING IT?

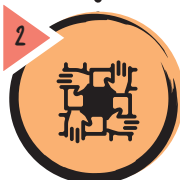
Town of Port Hedland

HOW LONG WILL IT TAKE?

6 to 12 months or less

WHO WILL WE CONSULT?

Hedland Aboriginal Strong Leaders



The Advisory Forum will speak to State, Federal, Industry and philanthropic funding bodies to find ways to integrate funding for local support services

WHO IS DOING IT?

Hedland Community Safety Advisory Forum

HOW LONG WILL IT TAKE?

2 to 3 years or less

WHO WILL WE CONSULT?

Hedland Aboriginal Strong Leaders

Empower Hedland's first Aboriginal people to create a safe healing plan and space.

WHO IS DOING IT?

Hedland Community Safety Advisory Forum / Native Title Groups and Corporations
Hedland Aboriginal Strong Leaders
Aboriginal Community

HOW LONG WILL IT TAKE?

2 to 3 years or less

WHO WILL WE CONSULT?

Hedland Aboriginal Strong Leaders

WITH THESE GOALS, WHAT WILL WE USE TO MEASURE HOW IT IS WORKING?

- ▶ Annual report progress findings
- ▶ Safety meeting minutes

- ▶ Safety survey community responses to trauma informed awareness

- ▶ The number or trauma informed training sessions delivered in Hedland