



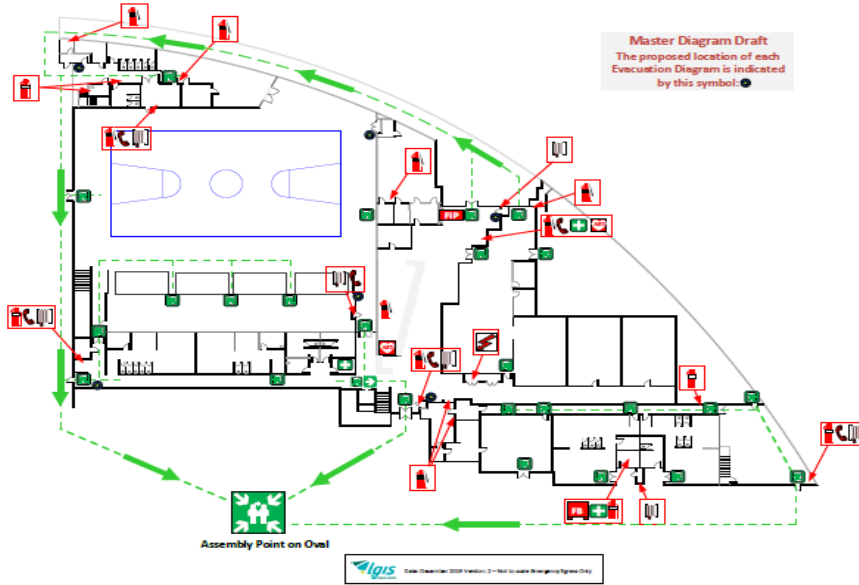
Appendices

1) Facility Evacuation Diagrams



Evacuation Diagram

Wanangkura Stadium – Ground Floor
Hamilton Road, South Hedland WA 6722
Closest Cross Road: Hedditch Street

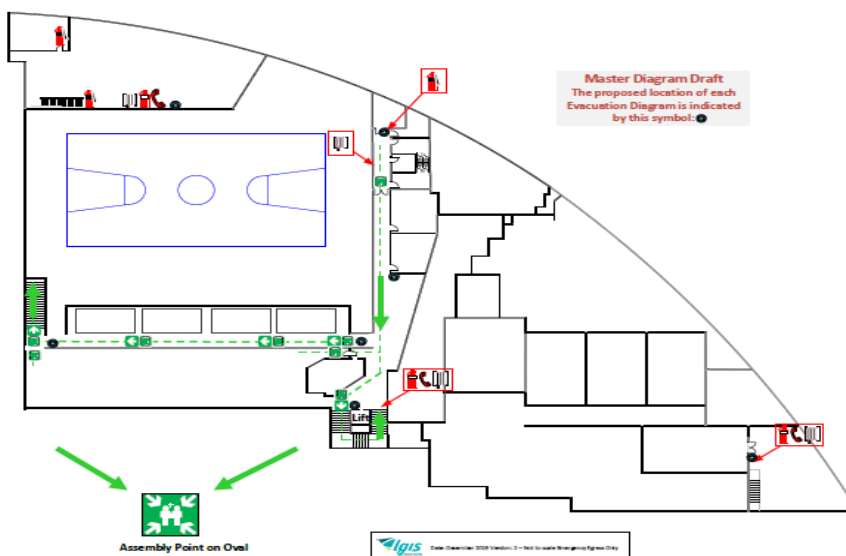


EMERGENCY INFORMATION	
In case of emergency contact:	
• Police, Fire or Ambulance (life threatening) 000	
• Police (non-urgent) 131 444	
• SES 132 500	
EMERGENCY PROCEDURES	
When directed by your Warden or when alarm is sounded:	
<ul style="list-style-type: none"> Evacuate the building via the nearest safe exit Proceed to the assembly area, or as directed by your Warden or Emergency Services Remain at the assembly area until directed by your Warden or Emergency Services 	
Do not re-enter the building until instructed by your Warden or the Emergency Services.	
LEGEND	
	Powder Extinguisher
	CO ₂ Fire Extinguisher
	Fire Blanket
	Hose Reel
	Warden Phone
	Fire Indication Panel
	Electrical Switchboard
	Automatic External Defibrillator
	First Aid Kit
	Emergency Exit
	Assembly Area
	Emergency Egress
	"You Are Here"



Evacuation Diagram

Wanangkura Stadium – Level 1
Hamilton Road, South Hedland WA 6722
Closest Cross Road: Hedditch Street



EMERGENCY INFORMATION	
In case of emergency contact:	
• Police, Fire or Ambulance (life threatening) 000	
• Police (non-urgent) 131 444	
• SES 132 500	
EMERGENCY PROCEDURES	
When directed by your Warden or when alarm is sounded:	
<ul style="list-style-type: none"> Evacuate the building via the nearest safe exit Proceed to the assembly area, or as directed by your Warden or Emergency Services Remain at the assembly area until directed by your Warden or Emergency Services 	
Do not re-enter the building until instructed by your Warden or the Emergency Services.	
LEGEND	
	Powder Extinguisher
	CO ₂ Fire Extinguisher
	Hose Reel
	Warden Phone
	Fire Indication Panel
	Electrical Switchboard
	Automatic External Defibrillator
	First Aid Kit
	Emergency Exit
	Assembly Area
	Emergency Egress
	"You Are Here"