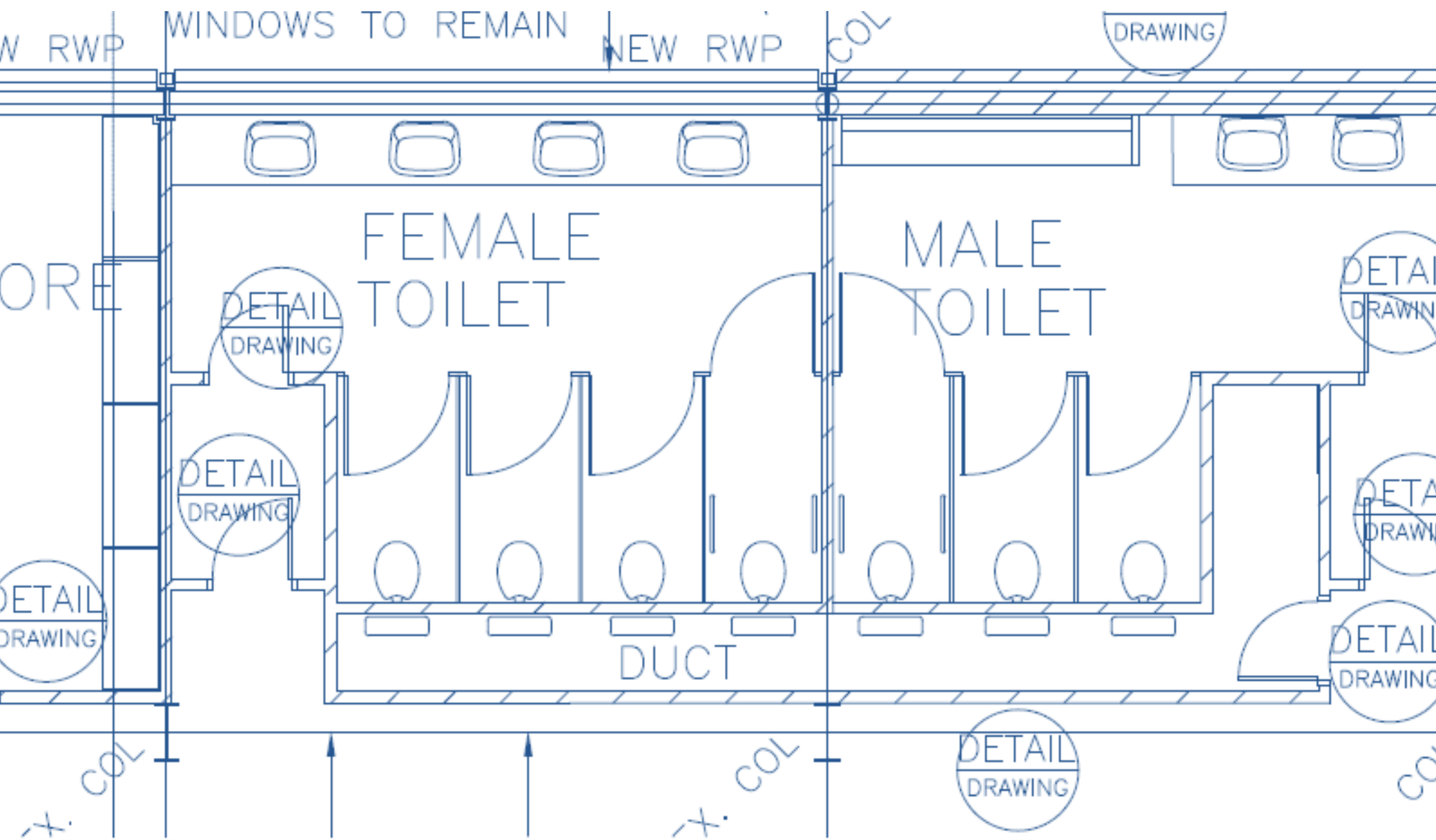


attachment 2

Port Hedland International Airport terminal renovations – colour palette



arrivals area toilets

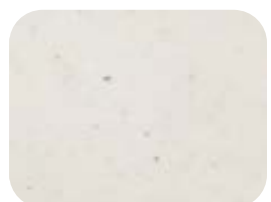
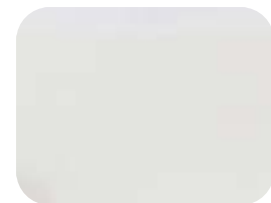


- a burst of colour to awaken the senses in a colour palette reflective of Pilbara's stunning sunsets
- core finishes are neutral yet high in contrast with a dark floor, light walls and mid-tone partitioning
- splash of colour injected in a surprising way, the upper section of walls and the ceiling bulkhead
- the bench top, which is the colour you will interact with most remains light, bright and white

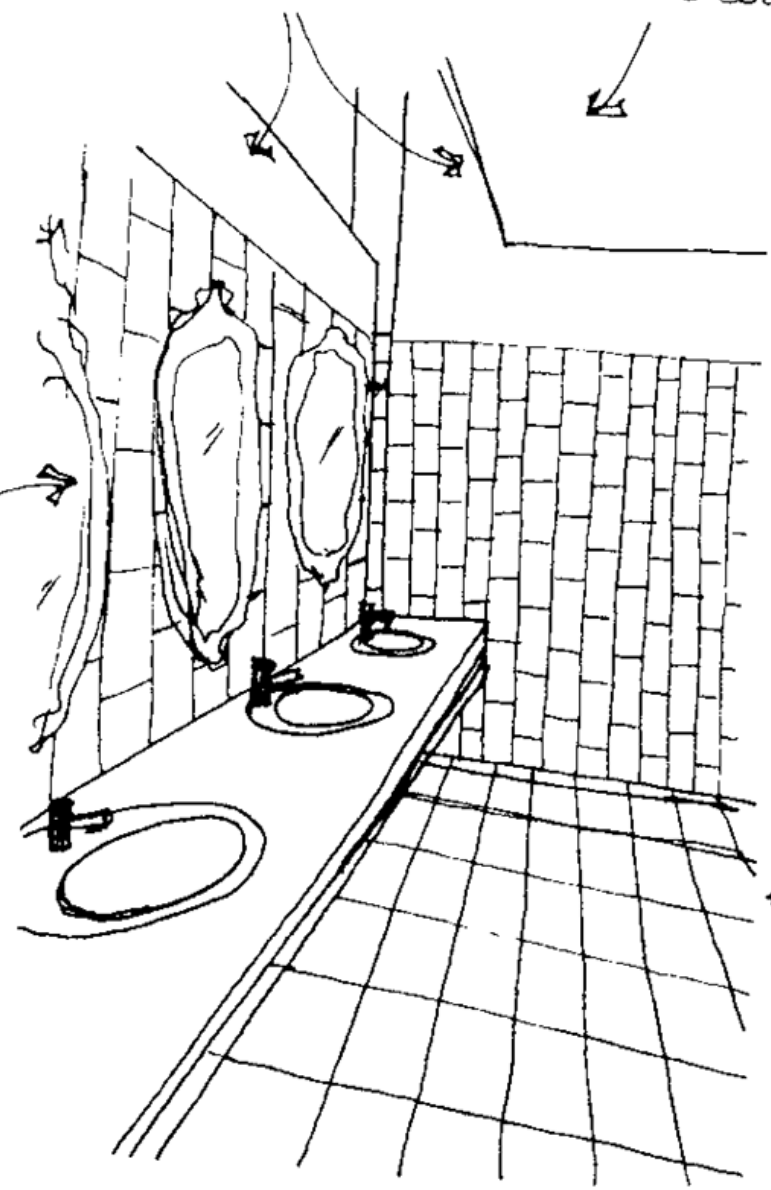


FEATURE COLOUR 1

FEATURE COLOUR 2



FRAMED MIRRORS
FRAME
IN 1st
FEATURE
COLOUR



GLOSS WALL TILE
100 x 200 mm
Laid VERTICAL
STRETCHER / BRICK BOND

MATT FLOOR TILE
200 x 200 mm
Laid STICK BOND.

ARRIVALS AREA.

arrivals toilets

wall tile

floor tile

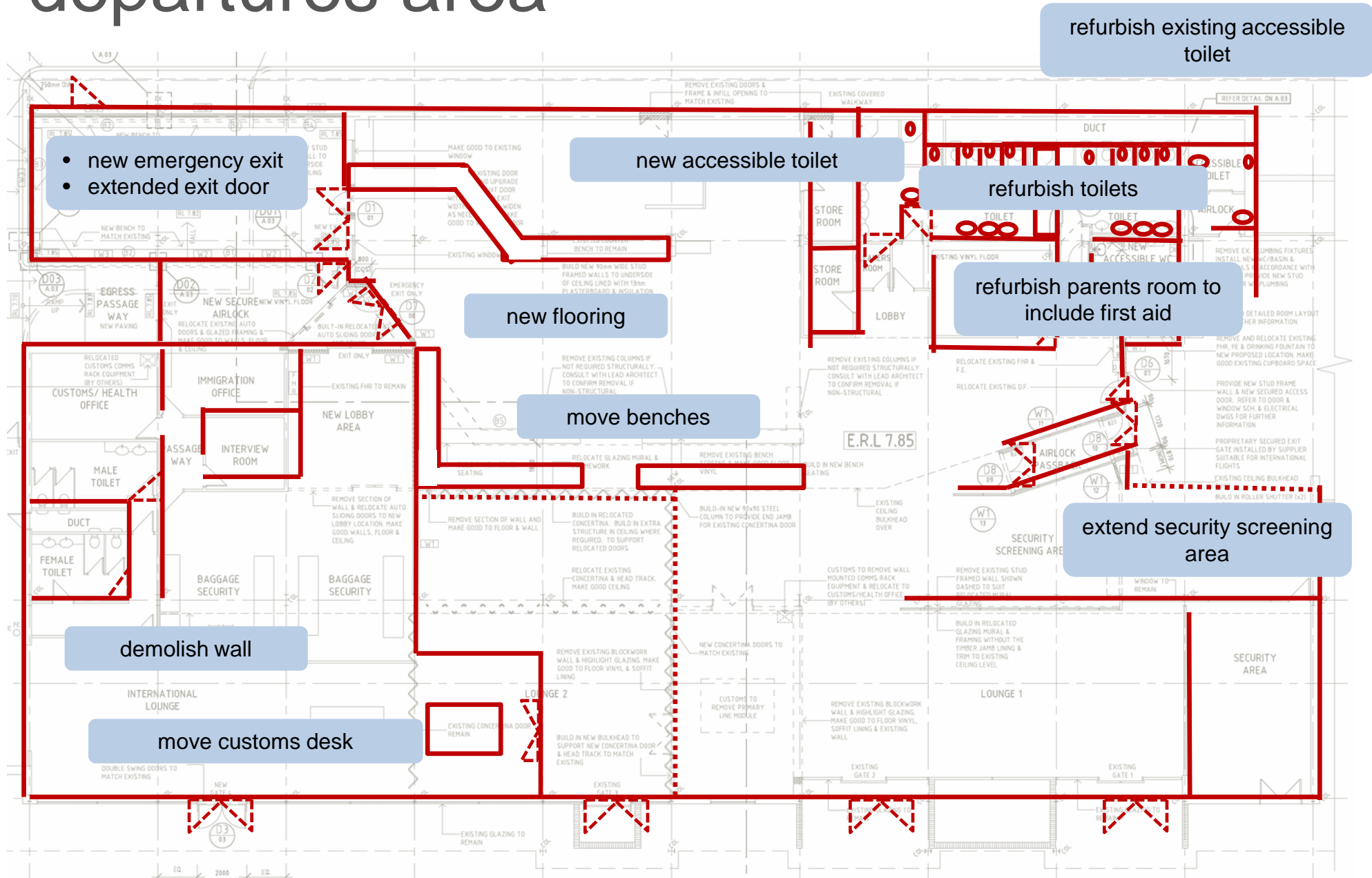
bulkhead

cubicle
partitions

benchtop

CUSTOMIZABLE
NATURAL FINISH
Laminex®

departures area



- soft colours that soothe and relax, inspired by the calming light of twilight. think soft sandy dunes and refreshing waves
- the core finishes are neutral and more tonal with only a subtle contrast
- mid toned flooring, light walls and light partitioning
- interest being provided by texture and finish rather than colour
- two options:
 - cool two tone wall in blue hues
 - sandy feature colour wall



departures toilets (option 1)

floor tile

wall tile

feature
wall tile

ceiling and
wall colour

cubicle
partitions

White Lace
SD2-140 / 26-

Blue Shadow
SE5-010 / 20-60C

SEASONED OAK
NATURAL FINISH
Laminex 458

departures toilets (option 2)

ceiling and
wall colour

White Lace
SD2-140 / 26-10A

SEASONED OAK
NATURAL FINISH
Laminex 45B

benchtop

feature
wall tile

cubicle
partitions

floor tile

wall tile

café floor tile

- links with existing vinyl floor
- hard wearing/ easy to clean
- hides dirt



interior paint palette

- crisp white perimeter including all walls and columns
- series of contrasting colours displayed on the various bulkheads to highlight their sculptural nature and the dramatic roofline



links with existing artwork

