

Town of  
Port Hedland

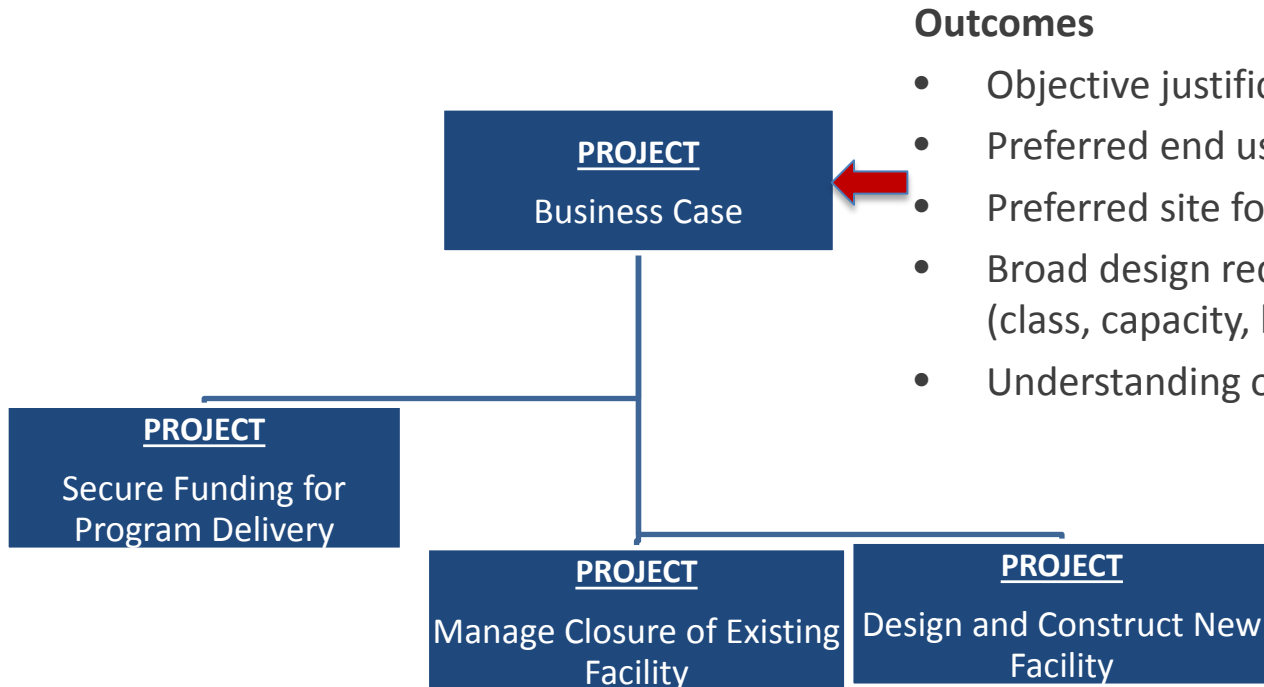
# Proposed Relocation of the South Hedland Waste Management Facility

**Russell Dyer, Director Engineering Services**  
**Community Conversations**  
**12 February 2014**



# Program Approach

## Relocation of the South Hedland Waste Management Facility



### Outcomes

- Objective justification for closure of landfill
- Preferred end use for existing landfill site
- Preferred site for new landfill
- Broad design requirements for new facility (class, capacity, location, footprint)
- Understanding of financial implications

# Demand Analysis

## Steps

1. Understand the key drivers
  - Planned residential development (Port City Growth Plan)
  - Proximity to airport
  - Approaching capacity
  - Opportunities to improve services and operations
2. Assess remaining capacity of current site
3. Scenario modelling to project “zero capacity remaining”

	<b>Business as Usual</b>	
<b>Population</b>	<b>Internal Recycling Initiatives</b>	<b>Final Landform</b>
	<b>External Diversion Initiatives</b>	

4. Timeframe for closure

PROJECT  
Business Case



# Findings



		Projected SHWMF Landfill Closure Date		
Population Growth Scenario	Final Landform Height	Business As Usual	Internal Recycling Initiatives	Large Scale Diversion Initiatives
High Growth	RL 22	FY2019-20 (6 years)	FY2019-20	FY2022-23
Constant Growth	RL 22	FY2020-21	FY2020-21	FY2024-25
High Growth	RL 28	FY2021-22	FY2022-23	FY2026-27
Constant Growth	RL 28	FY2022-23	FY2023-24	FY2029-30 (16 years)



# Site Selection

## Process

Desktop  
Review

Consultation

Establish  
Criteria

Identify  
Sites

Assess Sites



### Criteria Categories

- Community needs (i.e. travel distances, litter, smell)
- Required buffer distances (i.e. buildings, residences, airports)
- Proximity to ground and surface waters
- Geological setting
- Proximity to known threatened and endangered flora and fauna species
- Known cultural heritage
- Access to infrastructure and utilities
- Land ownership status
- Potential alternative uses for site
- Operational considerations (i.e. distances, size, access)

# Site Selection

## Process

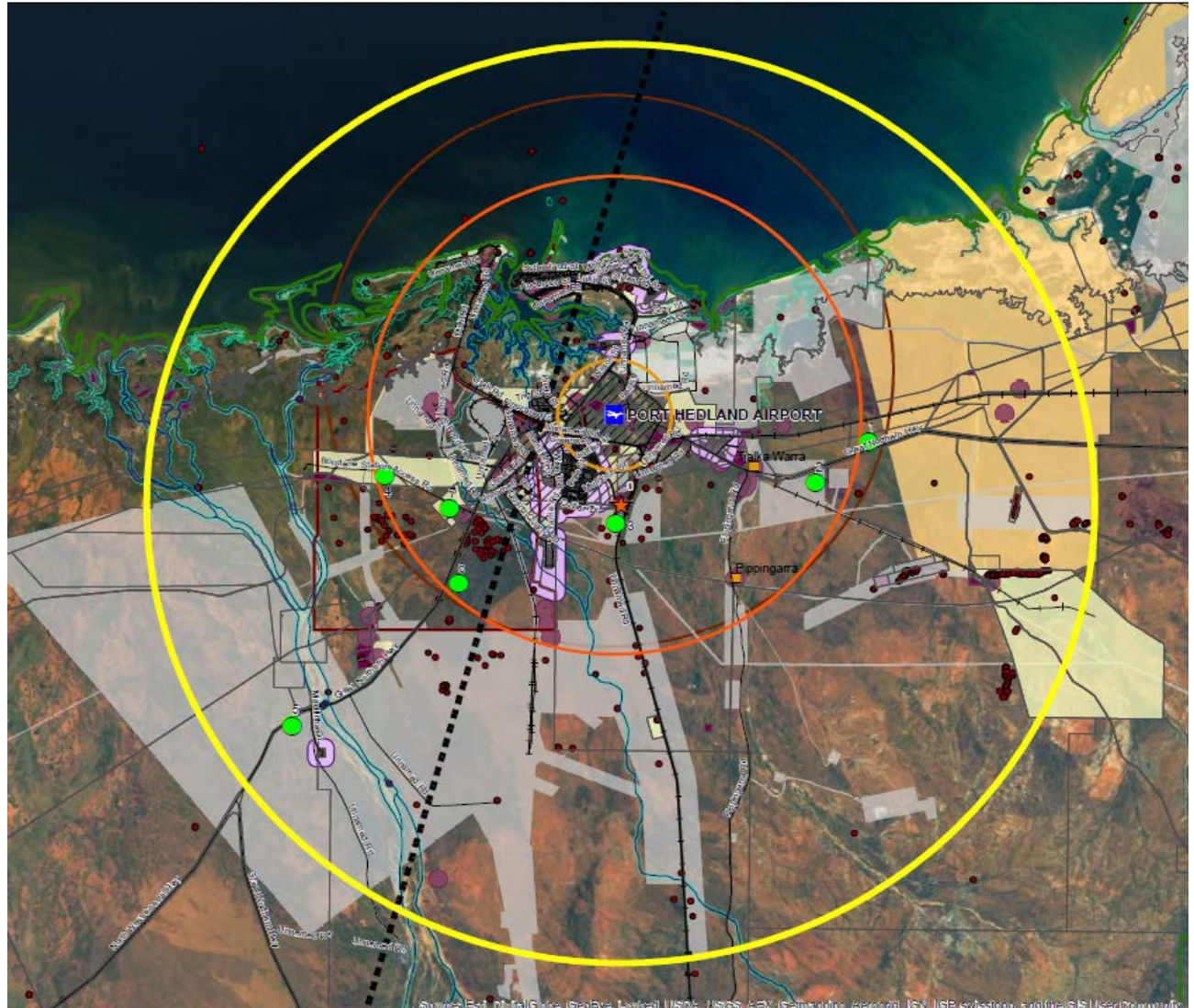
Desktop  
Review

Consultation

Establish  
Criteria

Identify  
Sites

Assess Sites



# Site Selection



# Redevelopment of Existing Site



## Process

Desktop Review

Consultation

Concept Design

Further consultation



Active  
Open  
Space  
Strategy



# Next Steps

## Business Case Project

- Consultants are currently estimating costs for the
  - closure and rehabilitation of existing site due March
  - planning, design, development and construction of a new site due June
- Project development to assist planning the next stages of delivery due June

## General

- Progress report to Council at March OCM
- Pending endorsement
  - more detailed site assessments of preferred location from July
  - further community consultation on redevelopment of existing landfill site April / May



Town of  
Port Hedland

Thank you, questions?

